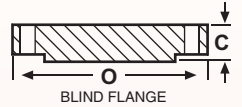
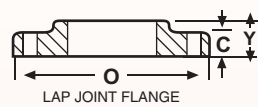
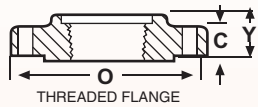
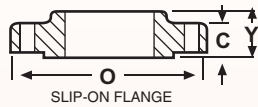
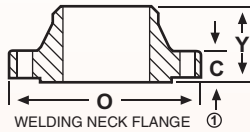




Industrial Business Link

SERVING ALL YOUR NEEDS FOR PIPE, PIPE-FITTINGS, FLANGES, VALVES, GASKETS & STUD BOLTS

SPECIALIST IN
Carbon Steel
Stainless Steel
Alloy Steel
Low Temperature
&
High Pressure
Materials



FLANGES ANSI B 16.5

Nom. Pipe Size	150 LB. FLANGES								300 LB. FLANGES								Nom. Pipe Size								
	O	C ²	Y ²			Bolt Circle	No. and Size of Holes	O	C ²	Y ²			Bolt Circle	No. and Size of Holes											
			Weld Neck	Slip on Thrd.	Lap Joint					Weld Neck	Slip on Thrd.	Lap Joint													
1/2	88.9	11.1	47.6	15.9	15.9	60.3	4 - 15.9	95.2	14.3	52.4	22.2	66.7	4 - 15.9	1/2											
3/4	98.4	12.7	52.4	15.9	15.9	69.3	4 - 15.9	117.5	15.9	57.1	25.4	82.5	4 - 19.05	3/4											
1	107.9	14.3	55.6	17.5	17.5	79.4	4 - 15.9	123.8	17.5	61.9	27	88.9	4 - 19.05	1											
1 1/4	117.5	15.9	57.1	20.6	20.6	88.9	4 - 15.9	133.4	19.05	65.1	27	98.4	4 - 19.05	1 1/4											
1 1/2	127	17.5	61.9	22.2	22.2	98.4	4 - 15.9	155.6	20.6	68.3	30.2	114.3	4 - 22.2	1 1/2											
2	152.4	19.1	63.5	25.4	25.4	120.6	4 - 19.05	165.1	22.2	69.8	33.3	127	8 - 19.05	2											
2 1/2	177.8	22.2	69.8	28.6	28.6	139.7	4 - 19	190.5	25.4	76.2	38.1	149.2	8 - 22.2	2 1/2											
3	190.5	23.8	69.8	30.2	30.2	152.4	4 - 19.05	209.6	28.6	79.4	42.9	168.3	8 - 22.2	3											
3 1/2	215.9	23.8	71.4	31.7	31.7	177.8	8 - 19.05	228.6	30.2	81	44.4	184.2	8 - 22.2	3 1/2											
4	228.6	23.8	76.2	33.3	33.3	190.5	8 - 19.05	254	31.8	85.7	47.6	200	8 - 22.2	4											
5	254	23.8	88.9	36.5	36.5	215.9	8 - 22.2	279.4	34.9	98.4	50.8	235	8 - 22.2	5											
6	279.4	25.4	88.9	39.7	39.7	241.3	8 - 22.2	317.5	36.5	98.4	52.4	269.9	12 - 22.2	6											
8	342.9	28.6	101.6	44.4	44.4	298.4	8 - 22.2	381	41.3	111.1	61.9	330.2	12 - 25.4	8											
10	406.4	30.2	101.6	49.2	49.2	361.9	12 - 25.4	444.5	47.6	117.5	66.7	387.3	16 - 28.6	10											
12	482.6	31.8	114.3	55.6	55.6	431.8	12 - 25.4	520.7	50.8	130.2	73	450.8	16 - 31.7	12											
14	533.4	34.9	127	57.1	79.4	476.2	12 - 28.6	584.2	54	142.9	76.2	514.3	20 - 31.7	14											
16	596.9	36.5	127	63.5	87.3	539.7	16 - 28.6	647.7	57.2	146.1	82.5	571.5	20 - 34.9	16											
18	635	39.7	139.7	68.3	96.8	577.8	16 - 31.7	711.2	60.3	158.8	88.9	628.6	24 - 34.9	18											
20	698.5	42.9	144.5	73	103.2	635	20 - 31.7	774.7	63.5	161.9	95.2	685.8	24 - 34.9	20											
24	812.8	47.6	152.4	82.5	111.1	749.3	20 - 34.9	914.4	69.8	168.3	106.4	812.8	24 - 41.3	24											
600 LB. FLANGES								900 LB. FLANGES								1500 LB. FLANGES									
1/2	95.2	14.3	52.4	22.2	22.2	66.7	4 - 15.9	120.7	22.2	60.3	31.7	31.7	82.5	4 - 22.2	1/2										
3/4	117.5	15.9	57.1	25.4	25.4	82.5	4 - 19.05	130.2	25.4	69.8	34.9	34.9	88.9	4 - 22.2	3/4										
1	123.8	17.5	61.9	27	27	88.9	4 - 19.05	142.2	28.6	73	41.3	41.3	101.6	4 - 25.4	1										
1 1/4	133.4	20.6	66.7	28.6	28.6	98.4	4 - 19.05	158.8	28.6	73	41.3	41.3	111.1	4 - 25.4	1 1/4										
1 1/2	155.6	22.2	69.8	31.7	31.7	114.3	4 - 22.2	117.8	31.8	82.5	44.4	44.4	123.8	4 - 28.6	1 1/2										
2	165.1	25.4	73	36.5	36.5	127	8 - 19.05	215.9	38.1	101.6	57.1	57.1	165.1	8 - 25.4	2										
2 1/2	190.5	28.6	79.4	41.3	41.3	149.2	8 - 22.2	244.5	41.3	104.8	63.5	63.5	190.5	8 - 28.6	2 1/2										
3	209.6	31.8	82.5	46	46	168.3	8 - 22.2	241.3	38.1	101.6	54	54	190.5	8 - 25.4	3										
3 1/2	228.6	34.9	85.7	49.2	49.2	184.1	8 - 25.4	292.1	44.5	114.3	69.8	69.8	235	8 - 31.7	3 1/2										
4	273.1	38.1	101.6	54	54	215.9	8 - 25.4	311.1	54	123.8	90.5	90.5	241.3	8 - 34.9	4										
5	330.2	44.4	114.3	60.3	60.3	266.7	8 - 28.6	349.2	50.8	127	79.4	79.4	279.4	8 - 34.9	5										
6	355.6	47.6	117.5	66.7	66.7	292.1	12 - 28.6	381	55.6	139.7	85.7	85.7	317.5	12 - 31.7	6										
8	419.1	55.6	133.4	76.2	76	349.2	12 - 31.7	469.9	63.5	161.9	101.6	114.3	393.7	12 - 38.1	8										
10	508	63.5	152.4	85.7	111.1	431.8	16 - 34.9	546.1	69.9	184.2	107.9	127	469.9	16 - 38.1	10										
12	558.8	66.7	155.6	92.1	117.5	488.9	20 - 34.9	609.6	79.4	200	117.5	142.9	533.4	20 - 38.1	12										
14	603.2	69.9	165.1	93.7	127	527	20 - 38.1	641.3	85.7	212.7	130.2	155.6	558.8	20 - 41.3	14										
16	685.8	76.2	177.8	106.4	139.7	603.2	20 - 41.3	704.8	88.9	215.9	133.3	165.1	615.9	20 - 44.4	16										
18	742.9	82.6	184.2	117.5	152.4	654	20 - 44.4	787.4	101.6	228.6	152.4	190.5	685.8	20 - 50.8	18										
20	812.8	88.9	190.5	127	165.1	723.9	24 - 44.4	857.2	108	247.7	158.7	209.6	749.3	20 - 54	20										
24	939.8	101.6	203.2	139.7	184.2	838.2	24 - 50.8	1041.4	139.7	292.1	203.2	266.7	901.7	20 - 66.7	24										
2500 LB. FLANGES								WELDING NECK FLANGE BORES ①																	
1/2	133.4	30.2	73	39.7	39.7	88.9	4 - 22.2	Nom. Pipe Size	Outside Diam.	Light Wall	INSIDE DIAMETER														Doubt Extra Strong
3/4	139.7	31.7	79.4	42.9	42.9	95.2	4 - 22.2				Sched. 20	Sched. 30	Std. Wall.	Sched. 40	Sched. 60	Extra Strong	Sched. 80	Sched. 100	Sched. 120	Sched. 140	Sched. 160				
1	158.8	34.9	88.9	47.6	47.6	108	4 - 25.4	1/2	21.3	17.11	16.3	16.5	15.8	15.8	14.9	13.8	13.8	--	--	11.7	6.4				
1 1/4	184.2	38.1	95.2	52.4	52.4	130.2	4 - 28.6	3/4	26.7	22.45	21.7	21.9	21	19.9	18.9	18.9	--	--	--	15.6	11.1				
1 1/2	203.2	44.4	111.1	60.3	60.3	146.1	4 - 31.7	1	33.4	27.86	27.4	27.6	26.6	25.6	24.3	24.3	--	--	--	20.7	15.2				
2	235	50.8	127	69.8	69.8	171.5	8 - 28.6	1 1/4	42.2	36.62	36.2	36.4	35.1	35.1	33.2	32.5	--	--	--	29.5	22.8				
2 1/2	266.7	57.1	142.9	79.4	79.4	196.9	8 - 31.7	1 1/2	48.3	42.72	42.3	42	40.9	40.9	39.3	38.1	--	--	--	34	28				
3	304.8	66.7	168.3	92.1	92.1	228.6	8 - 34.9	2	60.3	54.78	53.3	54	52.5	52.5	50.5	49.2	--	46	--	42.8	38.2				
4	355.6	76.2	190.5	108	108	273.1	8 - 41.3	2 1/2	73	66.92	66	63.45	62.7	62.7	61	59	--	--	--	53.9	45				
5	419.1	92.1	228.6	130.2	130.2	323.8	8 - 47.6	3	88.9	82.80	80.9	79.35	77.9	77.9	75.7	73.7	--	70.2	--	66.6	58.6				
6	482.6	108	273.1	152.4	152.4	368.3	8 - 54	3 1/2	101.6	95.50	93.6	92	90.1	90.1	87.6	85.4	--	--	--	76.2	69.3				
8	552.4	127	317.5	177.8	177.8	438.1	12 - 54	4	114.3	108.20	106.3	104.75	102.3	102.3	100.1	97.2	--	92	--	87.3	80.1				
10	673.1	165.1	419.1	228.6	228.6	539.7	12 - 66.7	5	141.3	134.49	131.3	--	128.2	128.2	125.1	122.2	--	115.9	--	109.5	103.2				
12	762	184.2	463.5	254	254	619.1	12 - 73	6	168.3	161.46	158.3	157.2	154.1	154.1	149.7	146.4	--	139.7	--	131.8	124.4				
								8	219.1	211.55	206.4	205	202.7	202.7	198.5	193.7	188.9	--	182.6	177.9	173.1	174.6			
								10	273.1	264.66	260.3	257.5	254.6	254.6	247.7	247.7	242.9	236.6	230.2	222.3	215.9	222.3			
								12	323.9	314.70	311.1	307.1	304.8	303.3	295.4	298.5	288.9	281	273.1	266.7	257.3	273.1			
								14	355.6	342.90	339.8	336.5	336.5	333.3	325.5	330.2	317.5	307.9	300	292.1	284.2	--			
								16	406.4	393.70	390.6	387.3	387.3	381	373.1	381	363.5	354	344.5	333.3	325.4	--			
								18	457.2	444.5	441.4	434.9	438.1	428.6	419.1	431.8	409.5	398.5	387.3	377.9	366.7	--			
								20	508	495.30	488.9	482.6	488.9	477.8	466.8	482.6	455.6	442.9	431.8	419.1	408	--			
								24	609.6	596.90	590.5	581	590.5	574.6	560.4	584.2	547.7	531.8	517.6	504.9	490.5	--			
			</																						